

Intermittent Duty Vacuum

Attaching Replacement Rainguard Kit to WS Housing

Instructions: How to properly align and attach the Replacement Rainguard Kit (#32986) onto the WS vacuum system housing.

Figure A



Figure B

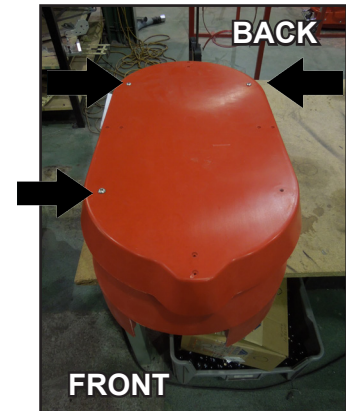


Figure C

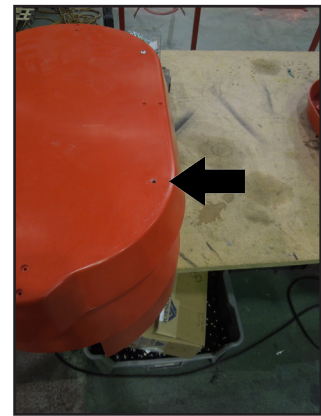


Figure D



Replacement Rainguard Assembly Kit (#32986)

- Rainguard
- (4) 1/4"-20 x 1.75 Button Head Screws
- (4) 1/4" Fender washers
- (4) 1/4"-20 Lock nuts

Note: Figure A shows the differences between the old Rainguard style and the new Rainguard style, denoting the four holes which you will be working with.

1. Place the Rainguard on the silencer. Locate the three holes that align with three of the holes in the silencer. Drop bolts into the holes, put on the nuts and washers and tighten. (Figure B)
2. Using the 4th hole, drill through the silencer with the .25-inch bit. (Figure C)
3. Attach fasteners through 4th hole and secure Rainguard to silencer. (Finished assembly shown in Figure D)